



# THE EVANS

1778 asf • 1469 N. Parkshire Way

3 beds • 2 baths

— CUSTOM-CRAFTED UPGRADES —

9' ceilings

Ceramic tile flooring

Engineered hardwood flooring

Grand foyer with architectural inset display

Matte black hardware

Hand-textured walls

Board and batten and true lap siding with brick & stone accents

— KITCHEN —

Full ceiling height custom-built alder stained & paint-grade cabinets

Quartz counter tops with full tiled backsplash

Walk-in pantry, center entertainment island – open to great room

GE Profile Stainless Steel Appliance package

Vaulted ceiling

— PRIMARY BEDROOM SUITE —

Tile flooring and quartz counter tops

Separate, dual vanity sinks

Separate room for water closet – walk-in full tiled shower

Large walk-in closet

— GREAT ROOM —

Gas fireplace with stone accent

Vaulted ceiling

— DINING —

Adjacent to kitchen with access to covered patio

Vaulted ceiling

*...Please see Reverse Side for More Details...*

DEVELOPED BY



**JON SHULTZ**  
**208.761.2047**  
jshultz@cbboise.com



COLDWELL BANKER  
TOMLINSON

[www.CherryBlossomMeridian.com](http://www.CherryBlossomMeridian.com)



### — GUEST BATH —

Quartz counter top, tub/shower with full tile surround and tile accents  
Tile flooring

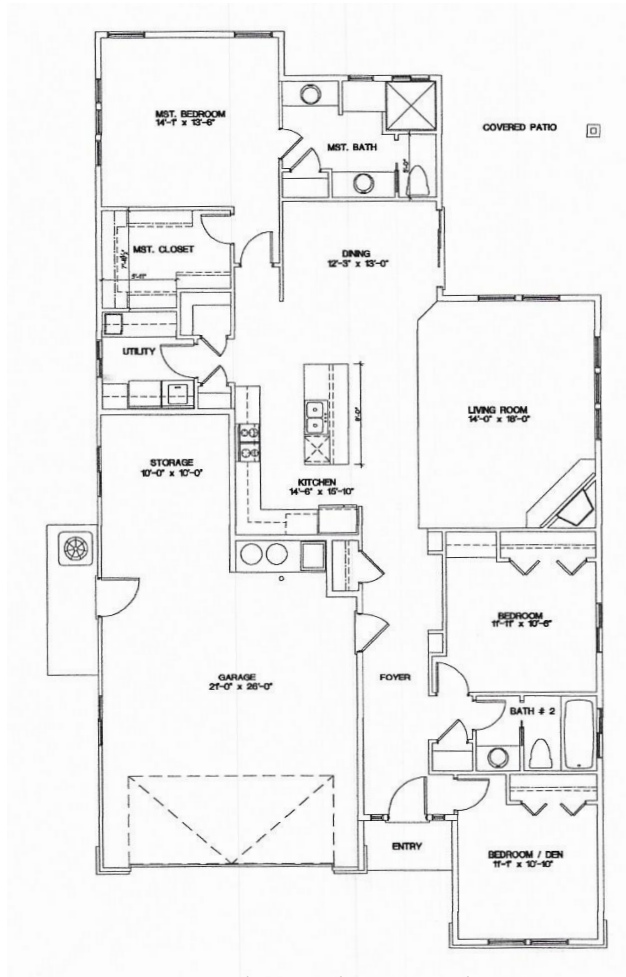
### — UTILITY ROOM —

Quartz counters and deep utility sink  
Folding table and cabinets  
Adjacent to primary bedroom for easy access

### — GARAGE & EXTERIOR —

3-car tandem garage with opener & keyless entry, carriage garage doors  
Plumbed for water softener  
220 volt  
Covered rear patio with gas BBQ line, full perimeter fencing  
Finished landscape included

### — CONVENIENT DOWNTOWN MERIDIAN ACCESS —



Floor Plan Similar



Elevation Similar

# THE EVANS

FLOOR PLAN

1778 ASF

Jayo Construction, Inc.



DEVELOPED BY



**JON SHULTZ**  
**208.761.2047**  
jshultz@cbboise.com

**COLDWELL BANKER**  
**TOMLINSON**

Information deemed reliable, but not guaranteed. Buyer to verify all information. If currently listed with a Broker, this is not intended as solicitation.