

MOUNT RAINIER

2094 asf • 712 W Cedarburg Dr.

3 beds, 2.5 baths

— CUSTOM-CRAFTED UPGRADES —

Home Energy Rated (HERS)
9' & 10' ceilings • LVP flooring • Blinds included
Interior doors with satin nickel hardware
Hand-textured walls & full wood-wrapped windows
True lap siding with stone accents
Carriage garage doors
Laundry room utility sink & mud bench
1-year builder's warranty, conditioned crawl space
Rear patio

— KITCHEN —

Custom stained alder cabinets
Quartz countertops with full tile backsplash
Bosch stainless steel gas cooktop & stainless steel dishwasher
Bosch stainless steel wall microwave & wall oven
Large walk-in butler pantry with sink
Moen stainless steel faucet

— PRIMARY BEDROOM SUITE —

Tile flooring, quartz countertops
Moen brushed nickel faucets
Custom alder cabinets
No step, walk-in tiled shower & separate room for water closet

— GREAT ROOM —

Gas fireplace with stone accents and mantel
9' ceilings

...Please see Reverse Side for More Details...

DEVELOPED BY



YVONNE EVANS
208.870.1007
idahomoveme@gmail.com

JON SHULTZ
208.761.2047
jshultz@cbboise.com



www.CherryBlossomMeridian.com



— GUEST BATH —

Tub/shower with full tile surround
Full quartz counter, tile backsplash, & Moen brushed nickel faucets

— POWDER ROOM —

Rectangle undermount sink & Moen brushed nickel faucet

— GARAGE & EXTERIOR —

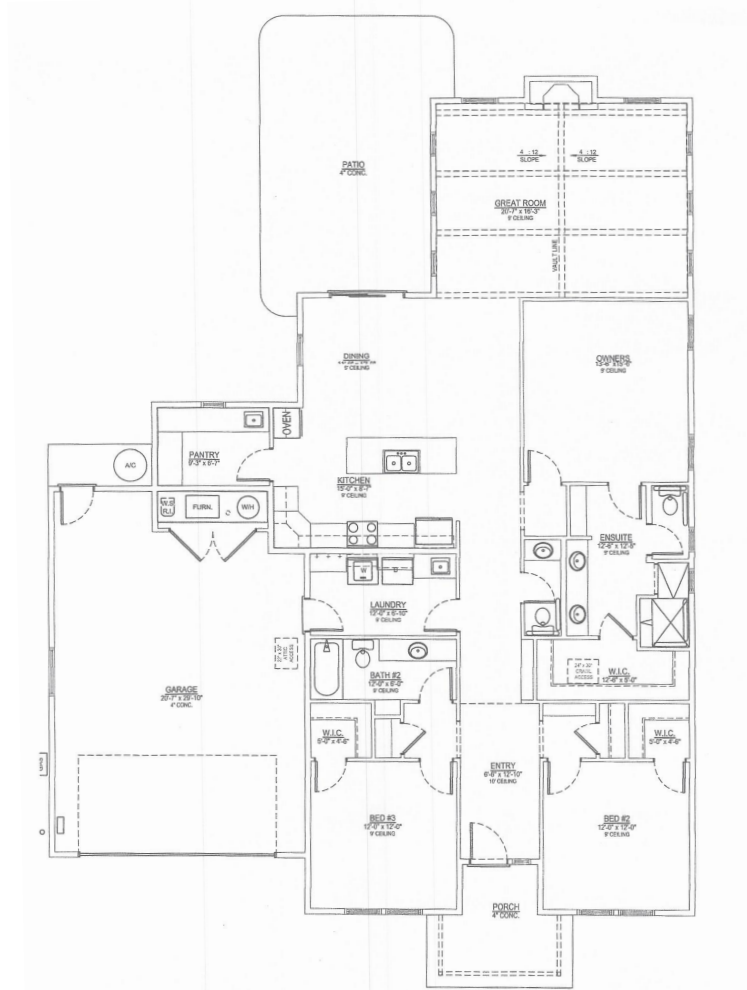
2-car garage with opener, keyless entry & belt-driven door operation
Fully finished & painted garage walls

220 volt

Plumbed for water softener

Gas BBQ stub on rear patio

Full lawn maintenance provided by homeowners' association



Floor Plan Similar



Elevation Similar

MOUNT RAINIER

FLOOR PLAN

2094 ASF



DEVELOPED BY
JAYO
JAYO DEVELOPMENT, INC.

YVONNE EVANS
208.870.1007
idahomoveme@gmail.com

JON SHULTZ
208.761.2047
jshultz@cbboise.com

CB
COLDWELL BANKER
TOMLINSON