

MADRID

1931 asf • 1270 N. Parkshire Way
3 beds, 2 baths

— CUSTOM-CRAFTED UPGRADES —

Home Energy Rated (HERS)
9' & 10' ceilings • LVP flooring • Blinds included
Interior doors with satin nickel hardware
Hand-textured walls & full wood-wrapped windows
True lap siding with stone accents
Carriage garage doors
Laundry room, utility sink, cabinets & mud bench
1-year builder's warranty, conditioned crawl space
Covered front porch and two rear patios

— KITCHEN —

Custom stained & painted alder cabinets
Quartz countertops with full tile backsplash
Bosch stainless steel gas cooktop & stainless steel dishwasher
Bosch stainless steel wall microwave & wall oven
Large walk-in pantry

— PRIMARY BEDROOM SUITE —

Tile flooring, quartz countertops
Brushed nickel faucets
Custom alder cabinets
No step, walk-in tiled shower & separate room for water closet

— GREAT ROOM —

Gas fireplace with stone accents and mantel
10' ceilings, views of common areas

...Please see Reverse Side for More Details...

DEVELOPED BY



YVONNE EVANS
208.870.1007
idahomoveme@gmail.com

JON SHULTZ
208.761.2047
jshultz@cbboise.com



www.CherryBlossomMeridian.com

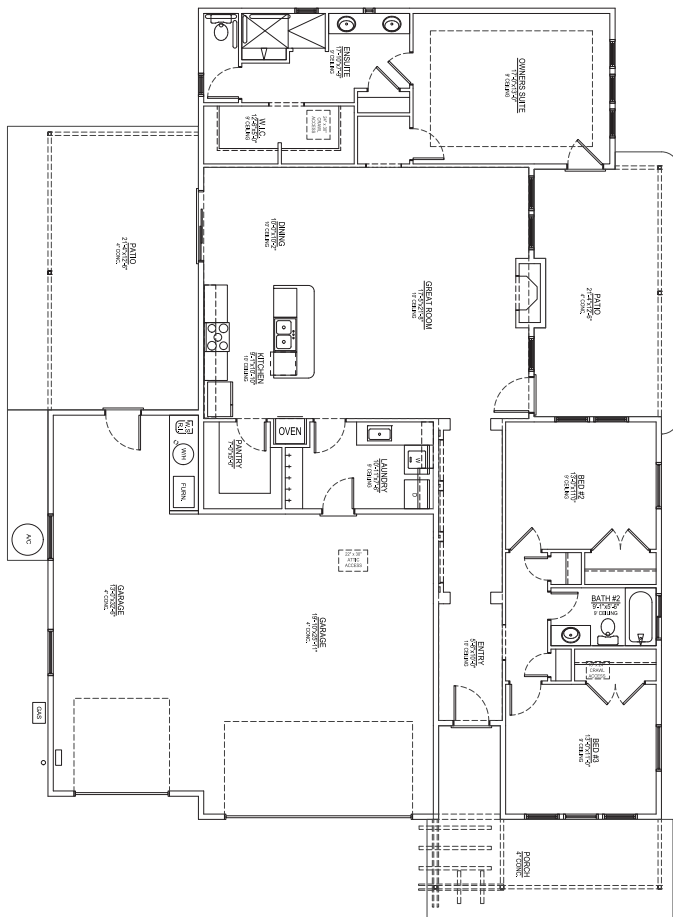


— GUEST BATH —

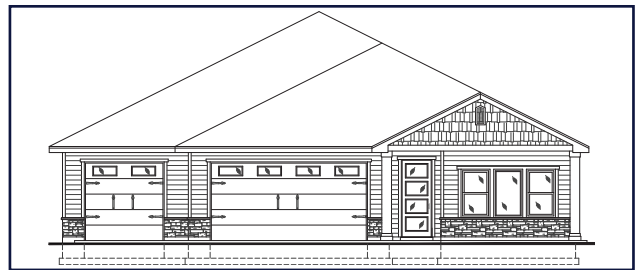
Tub/shower with full tile surround
Full quartz counter, tile backsplash, & Moen brushed nickel faucets

— GARAGE & EXTERIOR —

4 car tandem garage-Third bay 13' x 32', opener,
keyless entry & belt-driven door operation
Fully finished & painted garage walls
220 volt
Plumbed for water softener
Gas BBQ stub on covered patio
Full lawn maintenance provided by homeowners' association



Floor Plan Similar



Elevation Similar

MADRID
FLOOR PLAN
1931 ASF



DEVELOPED BY
JAYO
JAYO DEVELOPMENT, INC.

YVONNE EVANS
208.870.1007
idahomoveme@gmail.com

JON SHULTZ
208.761.2047
jshultz@cbboise.com

CB
COLDWELL BANKER
TOMLINSON