



GLEN HAVEN

1832 asf • 1399 N. Parkshire Way
3 bed, 2 baths

— **CUSTOM-CRAFTED UPGRADES** —

100% Home Energy Rated (HERS)
9' & 10' ceilings & LVP flooring
Interior doors with satin nickel hardware
Hand-textured walls & full wood-wrapped windows
True Lap siding with brick accents & carriage garage doors
Laundry room utility sink & mud bench
1-year builder's warranty, conditioned crawl space
Front courtyard with gate and rear covered patio

— **KITCHEN** —

Custom-built, alder cabinets
Quartz countertops with full tile backsplash & walk-in pantry
Bosch stainless steel gas cooktop & dishwasher
Bosch stainless steel wall microwave & wall oven
Moen brushed nickel faucet and pull out trash compartment

— **MASTER BEDROOM SUITE** —

Ceramic tile flooring, quartz countertops & Moen brushed nickel faucets
Walk-in tiled shower & separate room for water closet
Large walk-in closet

— **GREAT ROOM** —

Gas fireplace with brick surround & mantel
10' ceilings

...Please see Reverse Side for More Details...

DEVELOPED BY



YVONNE EVANS
208.870.1007
idahomoveme@gmail.com

JON SHULTZ
208.761.2047
jshultz@cbboise.com



www.CherryBlossomMeridian.com

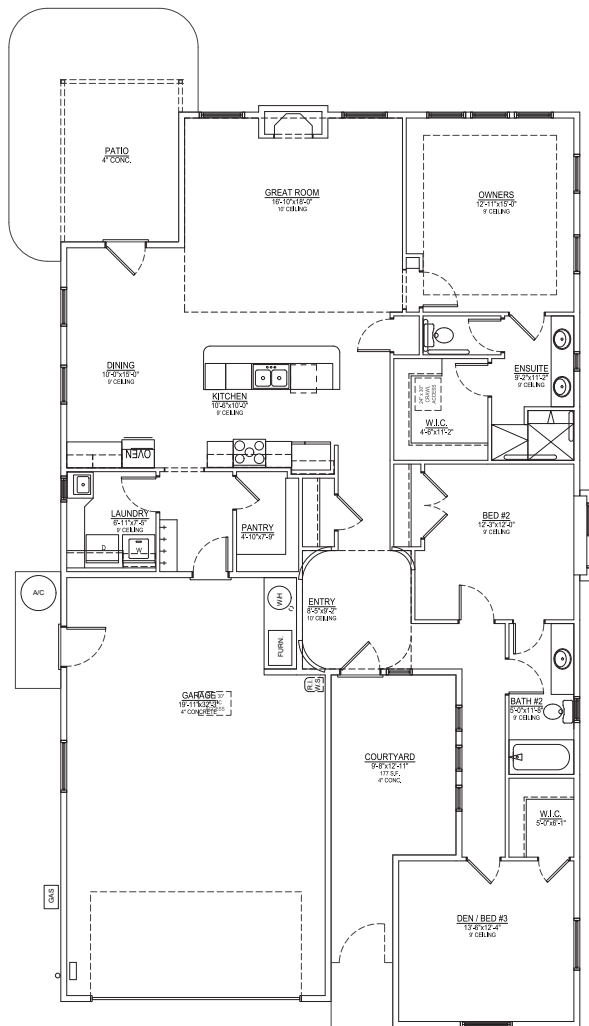


— GUEST BATH —

Tub/shower with full tile surround
Full quartz counter, tile backsplash, & Moen brushed nickel faucets

— GARAGE & EXTERIOR —

3-car tandem garage with opener & keyless entry
Fully finished garage walls
200 amp service
Plumbed for water softener
Gas BBQ stub on covered patio
Full lawn maintenance provided by homeowners' association



Floor Plan Similar



Elevation Similar

GLEN HAVEN
FLOORPLAN
1832 ASF



DEVELOPED BY
JAYO DEVELOPMENT, INC.

YVONNE EVANS
208.870.1007
idahomoveme@gmail.com

JON SHULTZ
208.761.2047
jshultz@cbboise.com

COLDWELL BANKER
TOMLINSON