

CARMEL COTTAGE

1932 asf • 643 W Cedarburg Dr.
3 beds, Den, 2 baths

— CUSTOM-CRAFTED UPGRADES —

Home Energy Rated (HERS)
9' & 10' ceilings • LVP flooring • Blinds included
Interior doors with satin nickel hardware
Hand-textured walls & full wood-wrapped windows
Board & batten with stone accents
Carriage garage doors
Laundry room utility sink
1-year builder's warranty, conditioned crawl space
Covered front porch and rear patio

— KITCHEN —

Custom stained alder cabinets
Quartz countertops with full tile backsplash
Bosch stainless steel gas cooktop & stainless steel dishwasher
Bosch stainless steel wall microwave & wall oven
Moen brushed nickel faucet

— PRIMARY BEDROOM SUITE —

Tile flooring, quartz countertops
Moen brushed nickel faucets
Custom alder cabinets
Walk-in tiled shower & separate room for water closet

— GREAT ROOM —

Gas fireplace with stone accents with alder mantel
10' ceilings & built-in shelves

...Please see Reverse Side for More Details...

DEVELOPED BY



YVONNE EVANS
208.870.1007
idahomoveme@gmail.com

JON SHULTZ
208.761.2047
jshultz@cbboise.com



www.CherryBlossomMeridian.com



— GUEST BATH —

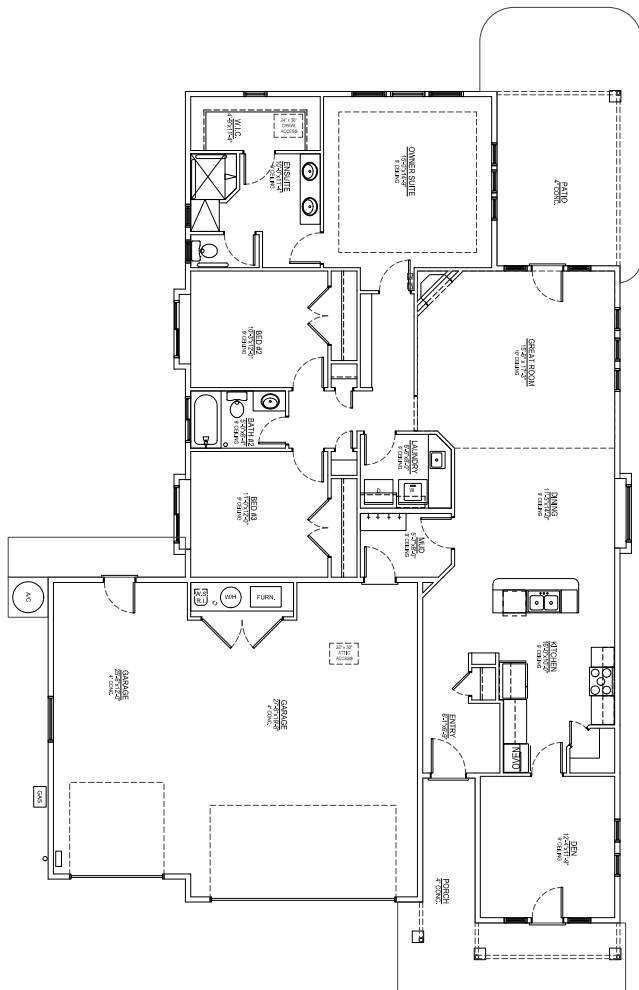
Tub/shower with full tile surround
Full quartz counter, tile backsplash, & Moen brushed nickel faucets

— DEN OR OFFICE —

12' x 12'
Access to front porch

— GARAGE & EXTERIOR —

3-car garage with opener & keyless entry
Fully finished & painted garage walls
Plumbed for water softener
Gas BBQ stub on covered patio
Full lawn maintenance provided by homeowners' association



Floor Plan Similar



Elevation Similar

CARMEL COTTAGE
FLOOR PLAN
1932 ASF



DEVELOPED BY
JAYO
JAYO DEVELOPMENT, INC.

YVONNE EVANS
208.870.1007
idahomoveme@gmail.com

JON SHULTZ
208.761.2047
jshultz@cbboise.com

CB
COLDWELL BANKER
TOMLINSON