



WINSFORD

2178 asf • 1291 N. Parkshire Way

3 bedrooms + den, 2 baths

— CUSTOM-CRAFTED UPGRADES —

9' and 10' ceilings

Ceramic tile flooring

Engineered hardwood flooring

Grand foyer with architectural insets, hand-textured walls

Matte black hardware

Board and batten siding with stone accents & carriage garage doors

— KITCHEN —

Full ceiling height custom alderwood painted and stained cabinets
with upper architectural lighting

Large walk-in pantry

Quartz counter tops with full tile backsplash

Large center entertainment island – open to great room

GE Profile stainless steel appliance package

Spacious dining room open to covered patio

— PRIMARY BEDROOM & EN SUITE —

Tile flooring and quartz counter tops

Separate, dual vanity sinks, separate room for water closet

Walk-in tiled shower, large walk-in closet

— GREAT ROOM —

Gas fireplace with stone accent & raised ceilings

Access to covered patio adjacent to common areas

— OFFICE —

Separate tech room with built-in desk with quartz counter

...Please see Reverse Side for More Details...

DEVELOPED BY



YVONNE EVANS
208.870.1007

idahomoveme@gmail.com

JON SHULTZ
208.761.2047

jsultz@cbboise.com



COLDWELL BANKER
TOMLINSON

www.CherryBlossomMeridian.com



— LAUNDRY ROOM —

Large folding table, deep sink & cabinets
Separate, large mud room with closet and bench

— GUEST BATH —

Quartz countertop with full tile surround, dual vanities & tile in tub/shower
Tile flooring

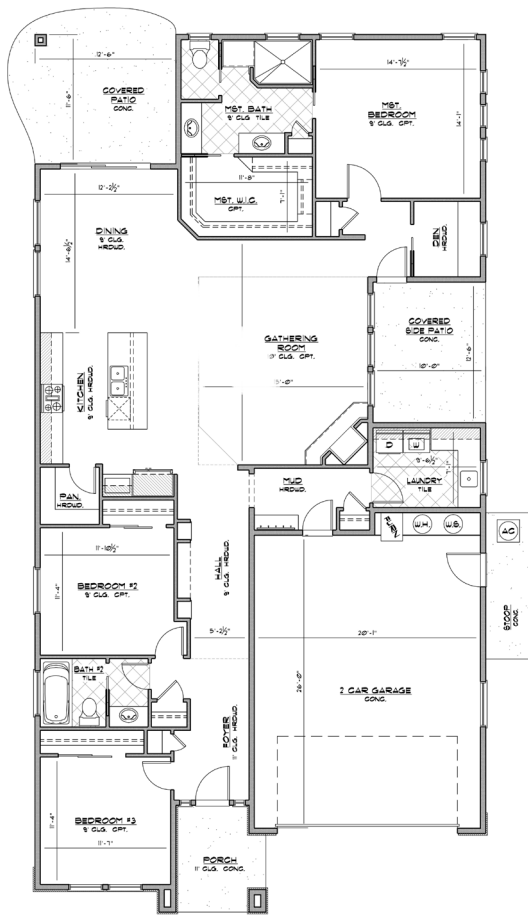
— GARAGE & EXTERIOR —

2-car, extra-wide garage for storage with keyless entry and carriage garage doors
Plumbed for water softener, full perimeter fencing

Two covered patios: one off the dining room with a gas BBQ hookup, and an additional side patio off the great room with a roll-up privacy blind

Backs up to spacious common areas on side and rear exterior
Full lawn maintenance provided by homeowners' association

— CONVENIENT DOWNTOWN MERIDIAN ACCESS —



Floor Plan Similar



Elevation Similar

WINSFORD

FLOOR PLAN

2178 ASF

Jayo Construction, Inc.



DEVELOPED BY



YVONNE EVANS
208.870.1007
idahomoveme@gmail.com

JON SHULTZ
208.761.2047
jshultz@cbboise.com

