

WELLINGTON

2173 asf • 569 W. Cedarburg
3 bed + office-flex room, 2.5 baths, 3-car garage

— CUSTOM-CRAFTED UPGRADES —

9' and 14' ceilings
Ceramic tile flooring
Engineered hardwood flooring
12' Grand foyer with architectural inset
Hand-textured walls
Brushed pewter hardware
Dramatic entry with wooden beams and cedar soffits
True Lap siding with ledgestone accents

— KITCHEN —

Full ceiling height custom alder stained & paint-grade cabinets
Large walk-in pantry
Quartz & slab granite with full accented tile backsplash
Large center entertainment island – open to great room
GE Profile stainless steel appliance package with double ovens

— PRIMARY BEDROOM SUITE —

Tile flooring and slab granite countertops
Dual vanity sinks, separate room for water closet
Walk-in tiled shower, large walk-in closet

— GREAT ROOM —

Gas fireplace with raised hearth & mantle with ledgestone accents
Built-in entertainment center cabinets, 14' ceilings
Access to entertaining covered patio

...Please see Reverse Side for More Details...

DEVELOPED BY



YVONNE EVANS
208.870.1007
idahomoveme@gmail.com

JON SHULTZ
208.761.2047
jshultz@cbboise.com



www.CherryBlossomMeridian.com



— OFFICE —

Separate office-flex room adjacent to Great Room
Built-in desk & granite countertop

— LAUNDRY ROOM —

Spacious laundry room with large folding table, cabinets, mud bench & tile flooring
Quartz countertops with deep utility sink

— GUEST BATH —

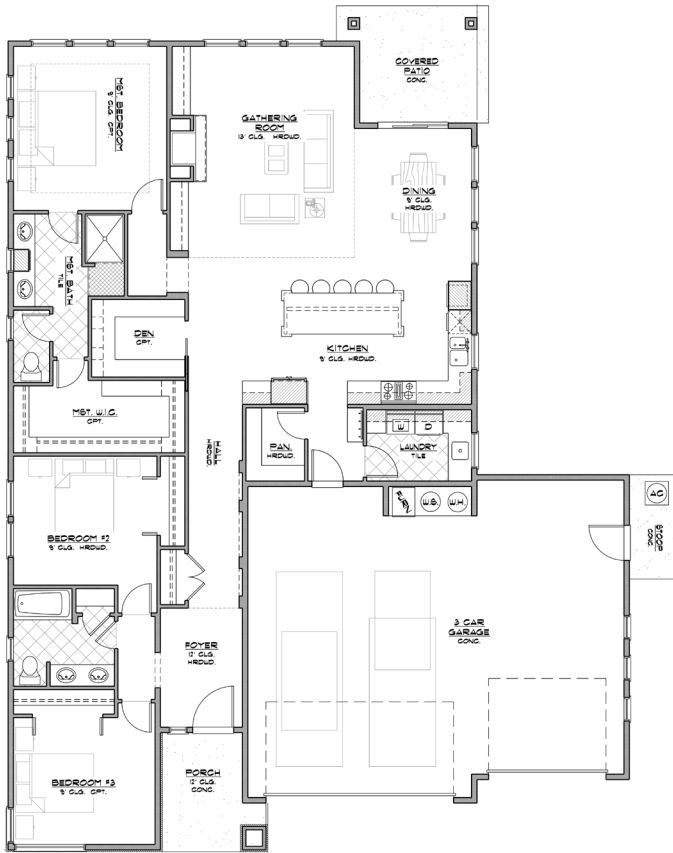
Tile flooring & quartz countertops, full tub/shower surround & dual vanities
Additional 1/2 bath off great room

— GARAGE & EXTERIOR —

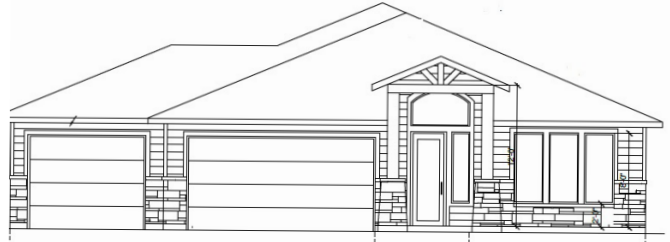
3-car garage with opener, keyless entry & carriage garage doors
Plumbed for water softener

Covered rear patio with gas BBQ line, full perimeter fencing
Front and rear lawn maintenance provided by homeowners' association

— CONVENIENT DOWNTOWN MERIDIAN ACCESS —



Floor Plan Similar



Elevation Similar

WELLINGTON

FLOOR PLAN

2173 ASF



CAMERON JAYO
HOMES

IT'S ALL IN THE DETAILS



DEVELOPED BY



YVONNE EVANS
208.870.1007

idahomoveme@gmail.com

JON SHULTZ
208.761.2047

jshultz@cbboise.com



COLDWELL BANKER
TOMLINSON